

COMMODORE HOTEL - - -

Atlantic City, N. J.

W 2 B I G

"TOO BIG"

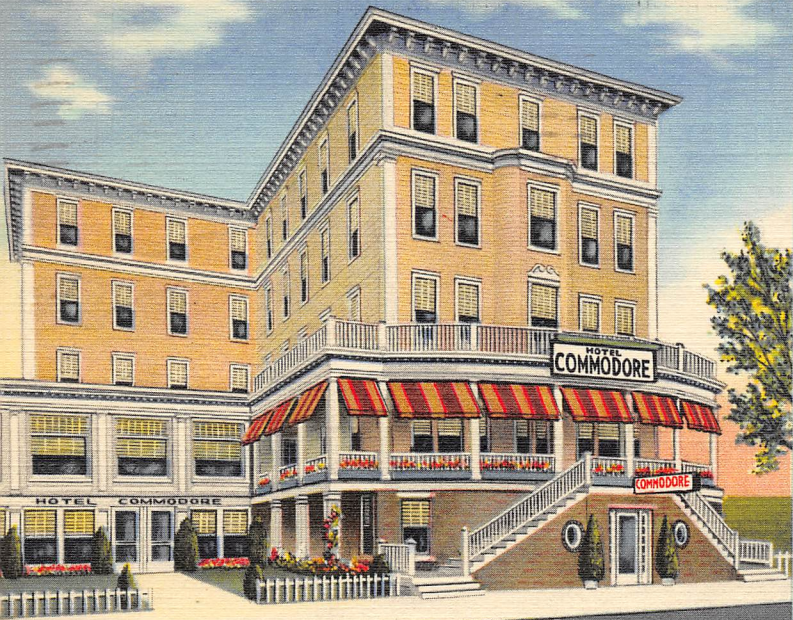
This confirms your reception of my 75 Zone
sig recently.

xmt. BC610K - 500watts zone - 750watts
Pwr. HQ120X.

Ben Ben Robin



Wm. L. Bensingers
414 S. Market St.
Mt. Carmel, Pa.



W2BIG

Hotel

COMMODORE

715 Pacific Avenue
at
St. Charles Place

ATLANTIC CITY
NEW JERSEY



HOTEL COMMODORE

715 Pacific Avenue
at St. Charles Place
ATLANTIC CITY, NEW JERSEY
100 Rooms 50 Baths

Dear OM:

You will find attractive, comfortable accommodations at low-cost rates in a pleasant atmosphere of coolness and quiet at the Hotel Commodore. One block from the beach and Boardwalk, and a short distance from the world famous Steel Pier, the Commodore offers spacious lobby and sun porch, elevator service and free surf bathing privileges.

Summer rates are \$2.00 - \$2.50 per person daily, room with running water; and \$3.00 - \$3.50 per person daily, room with bath. Spring and Fall rates lower. Car parking nearby fifty cents for twenty-four hours.

May we have the pleasure of reserving accommodations for you?

Cordially yours,
BEN. ROBIN, W2BIG, Manager



POST CARD

W2ZQ
Edward G. Raser
128 N. Warren St.
Trenton, N. J.

